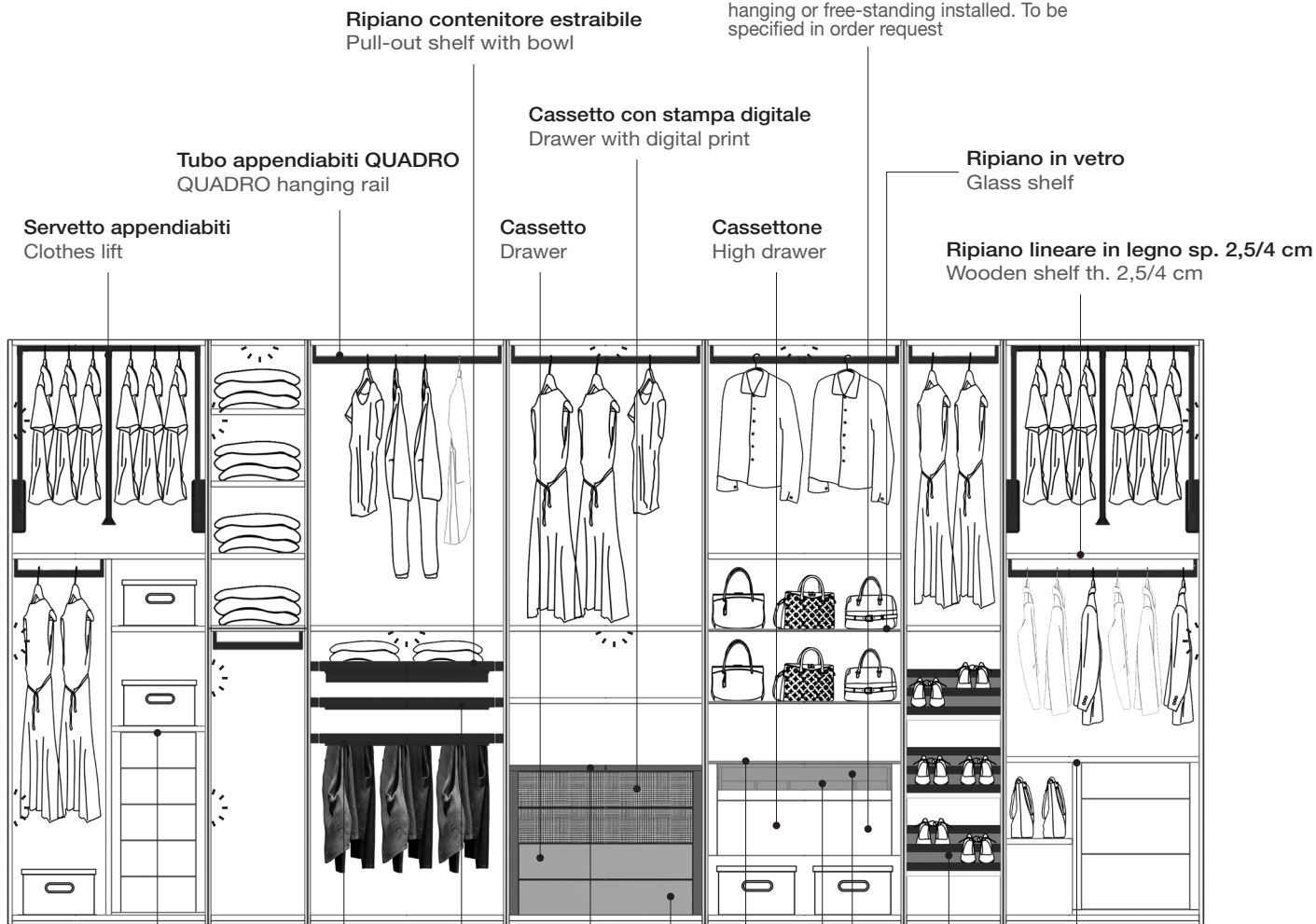


OFF

On - Off

ARMADI BATTENTI - ARMADI SCORREVOLI
HINGED WARDROBES - SLIDING WARDROBESAttrezzatura interna
Internal equipmentTutte le cassettiere interne prevedono il montaggio sospese o in appoggio.
Da specificare all'ordine

All the inner chest of drawers can be hanging or free-standing installed. To be specified in order request



Cassettiera interna in nobilitato o laccato. Frontale cassetto nobilitato, laccato opaco, vetro laccato, specchiato o vetro retrostampato (solo collezione VETRO-VERO)
Inner chest of drawers. Melamine or lacquered finish. Front part drawers melamine, lacquered, lacquered glass, mirrored glass or backprinted glass (VETRO-VERO collection only)



Luce led ad incasso per fianco con di cavo L. 150 cm e attacco per trasformatore
Embedded side led light with cable W. 150 cm and connection for transformer

Luce led inclinata ad incasso per ripiani
Inclined embedded led light for shelf

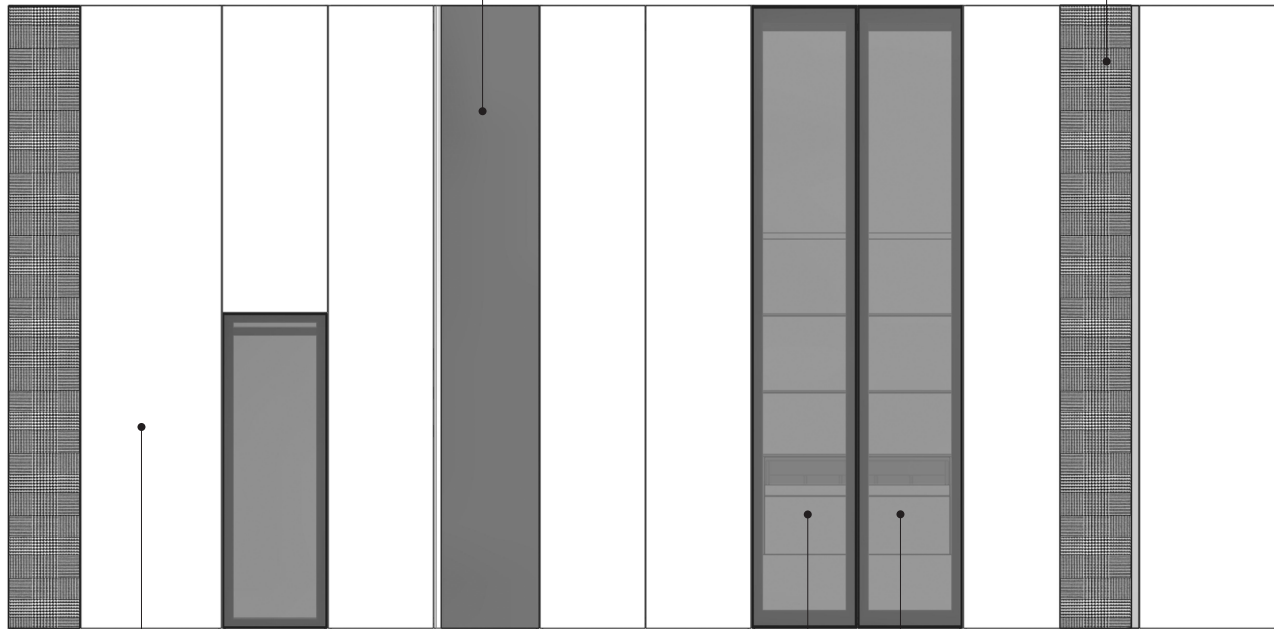
ARMADI BATTENTI HINGED WARDROBES

Tipologie di ante battenti
Hinged doors kinds

Anta vetro extrachiaro retrolaccato
Extra-clear back lacquered glass door

Anta vetro laccato retrostampato (solo collezione VETRO-VERO)

Lacquered and backprinted glass door
(VETRO-VERO collection only)



Finitura anta nobilitato, laccato, laccato lucido, essenza, essenza lucida
Melamine, lacquered, glossy lacquered, wood, glossy wood door finish

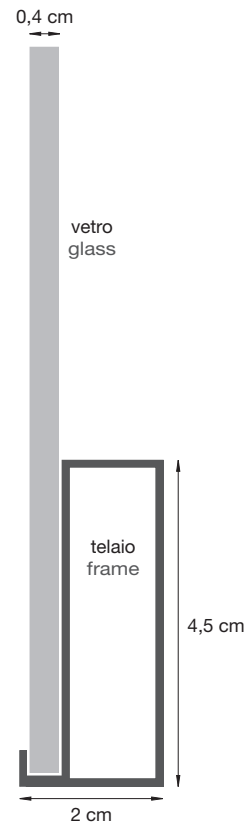
Anta vetro con telaio alluminio nero, vetro fumè o stop-sol. Stampa digitale a righe orizzontali (nero/tortora) solo su vetro fumè.
Door with aluminium frame black color, smoked or stop-sol glass. Digital print with horizontal stripes (nero/tortora) on smoked glass only

Anta vetro con telaio alluminio nero con pellicola tessuto semitrasparente applicata solo su vetro trasparente extrachiaro
Door with aluminium frame black color with semi-transparent fabric film applied on extra-clear transparent glass only

Attrezzatura interna,
accessori, componenti
Internal equipment,
accessories, components

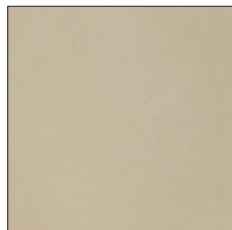
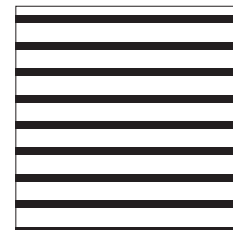
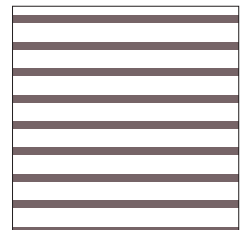
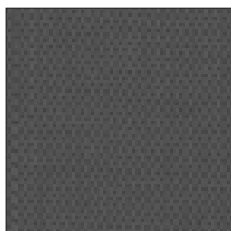
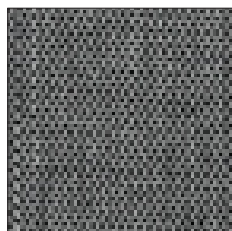
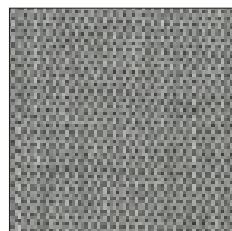
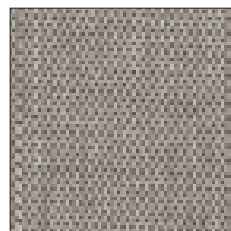
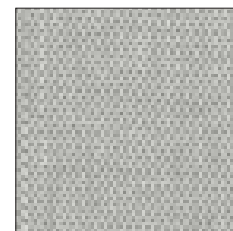
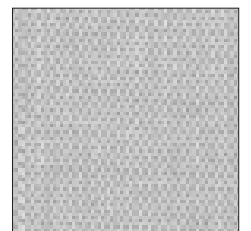
OFF

On - Off

**FINITURE
FINISHES****ANTA TELAIO CON VETRO**
FRAMED DOOR WITH GLASS

Anta vetro con telaio in alluminio colore nero. L'anta può montare vetro fumè o vetro stop-sol. Al vetro può venire applicata una stampa digitale a righe orizzontali color nero o tortora, oppure nella parte interna del vetro può essere applicata una pellicola tessuto semitrasparente disponibile in 6 tonalità di colore.

Glass door with aluminium black frame. The door can be in smoked or stop-sol glass. It is possible to print the glass with horizontal stripes in nero or tortora colour, as an alternative, it is possible to apply behind the glass a film of semi-transparent raised fabric available in 6 different shades.

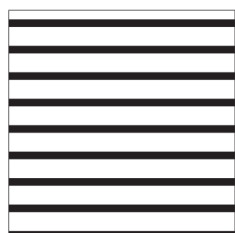
Tipologie di vetro
Kinds of glass**FU vetro fumè**
smoked glass**SS vetro stop-sol**
stop-sol glass**Stampa digitale a righe orizzontali**
Digital print with horizontal stripes**nero**solo con vetro fumè
with smoked glass only**tortora****Tessuto in rilievo semitrasparente**
Semi-transparent raised fabric**01 Chalk nero****02 Rock****03 Ash****04 Oak****05 Bone****06 Chalk bianco**solo con vetro trasparente extrachiario
with extra-clear transparent glass only

OFF

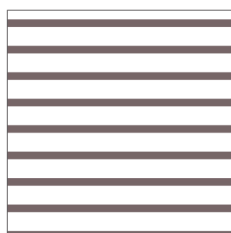
On - Off

**FINITURE
FINISHES**

ANTA TELAIO CON VETRO
FRAMED DOOR WITH GLASS

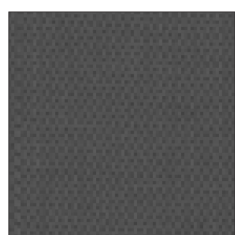


nero

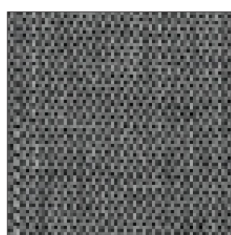


tortora

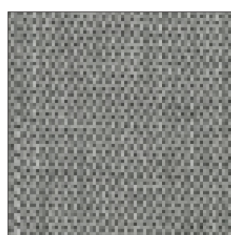
Stampa digitale
Digital print



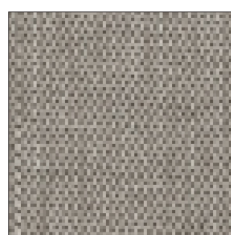
01 Chalk nero



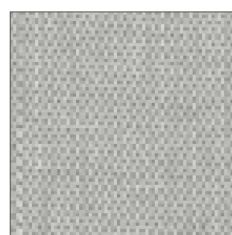
02 Rock



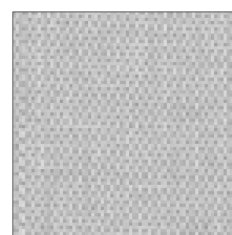
03 Ash



04 Oak



05 Bone



06 Chalk bianco

Pellicola tessuto semitrasparente applicata a vetro 100% poliestere, antibatterico e certificato privo di sostanze nocive. Resistente al fuoco secondo B1 (normativa tedesca DIN 4102-1), M1 (normativa francese NF P92 501-7) e B-s1-d0 (normativa europea EN13501-1). Per la pulizia della superficie utilizzare panno in microfibra con acqua tiepida o un detergente per tessuti senza solventi.

Semi-transparent raised fabric film applied on glass 100% polyester, antibacterial and free of harmful substances. Fire resistant classification B (German legislation DIN 4102-1), M1 (French legislation NF P92 501-7) and B-s1-d0 (European legislation EN13501-1). For surface cleaning use a microfiber cloth with lukewarm water or a textile cleaner without solvents



Pellicola tessuto semitrasparente per vetro
Semi-transparent raised fabric film for glass